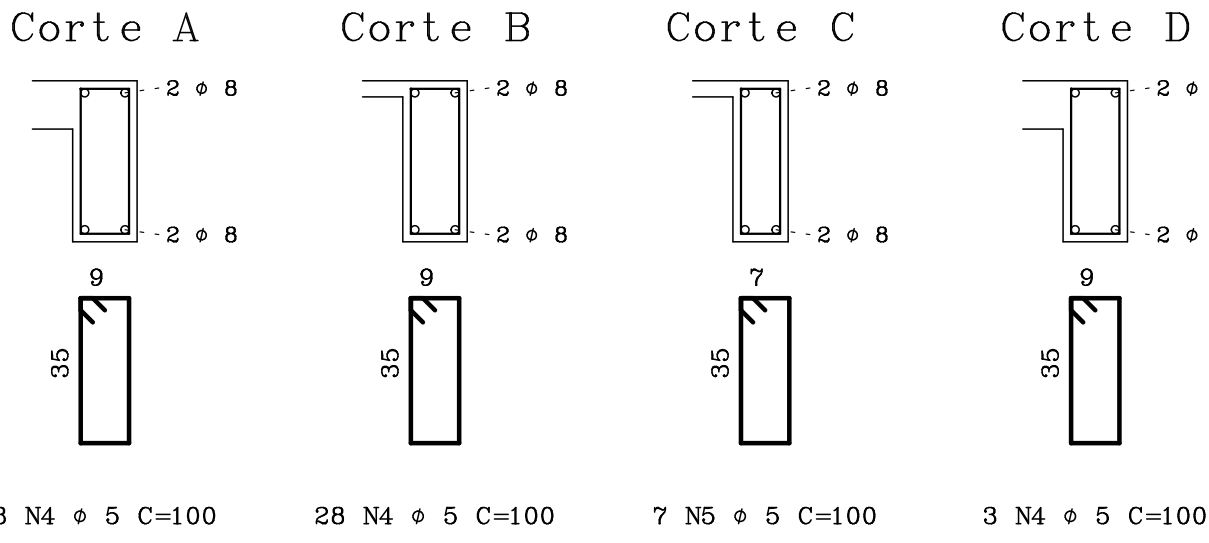
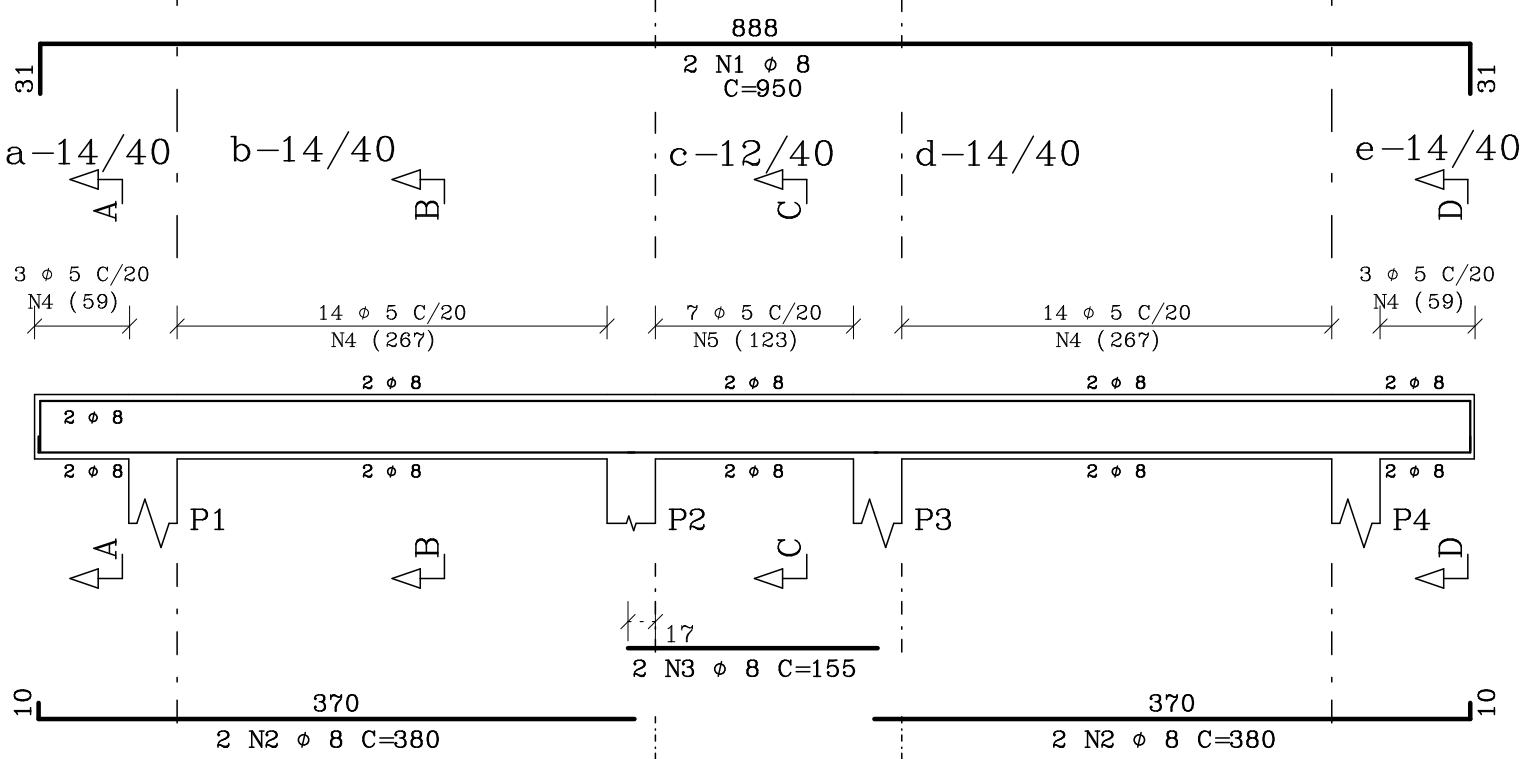
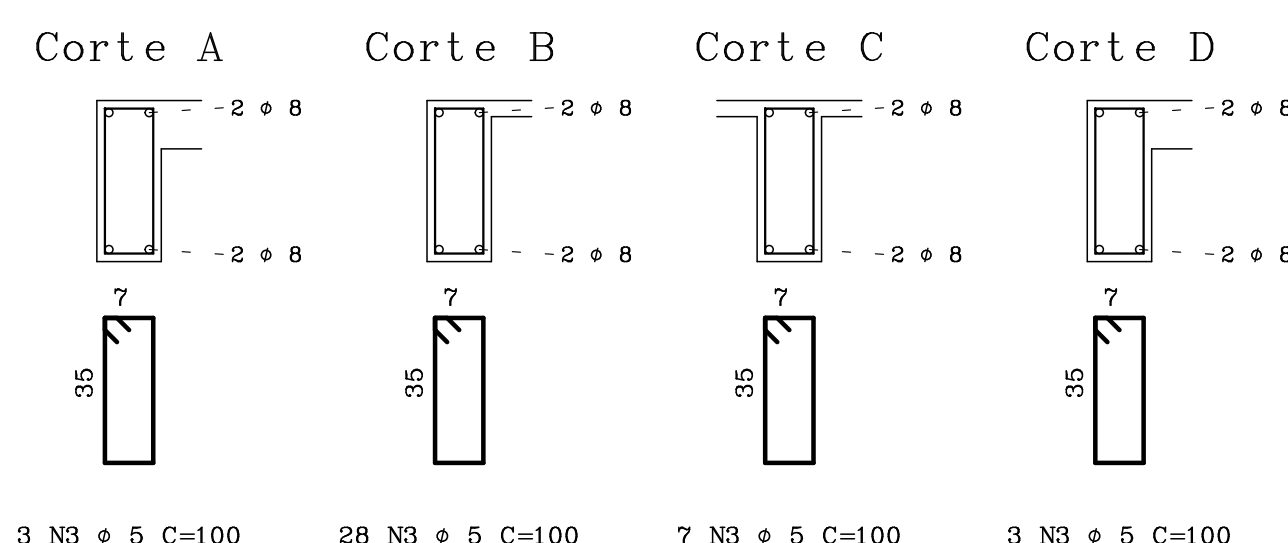
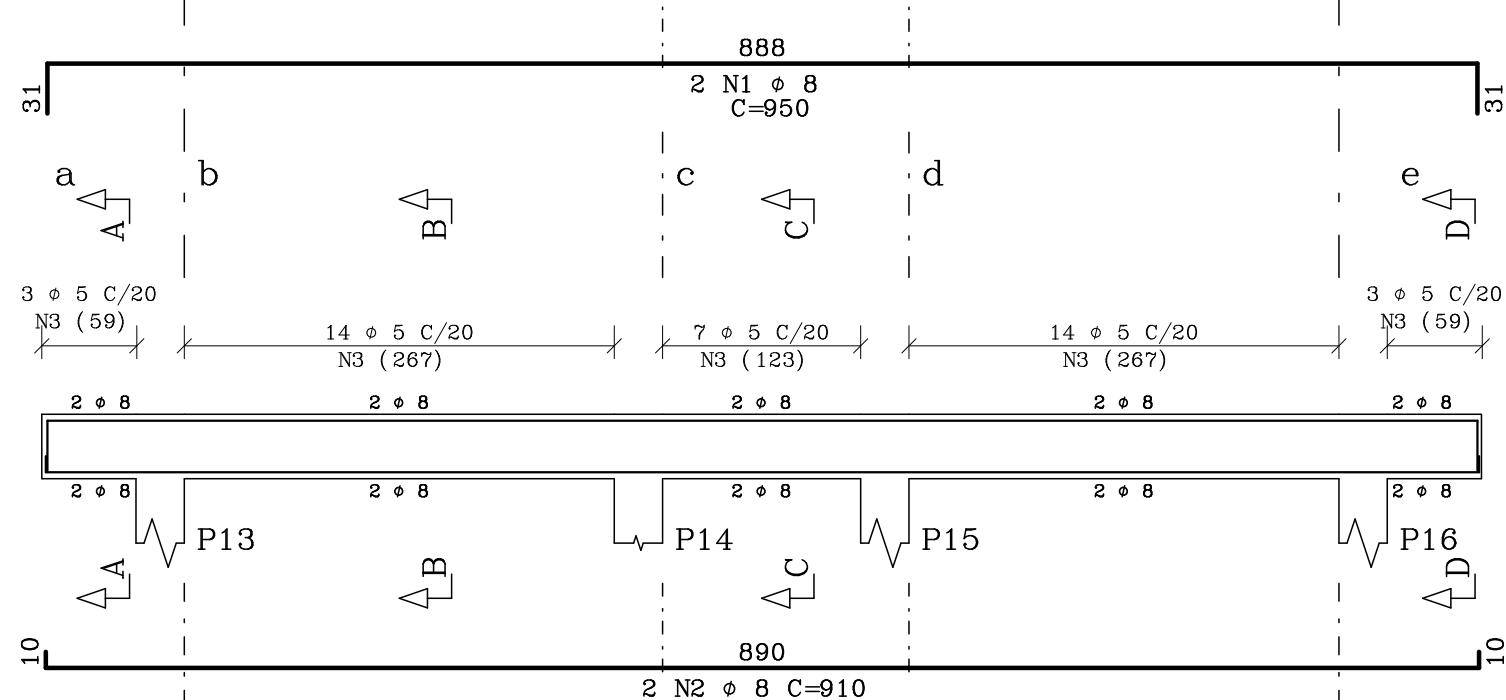


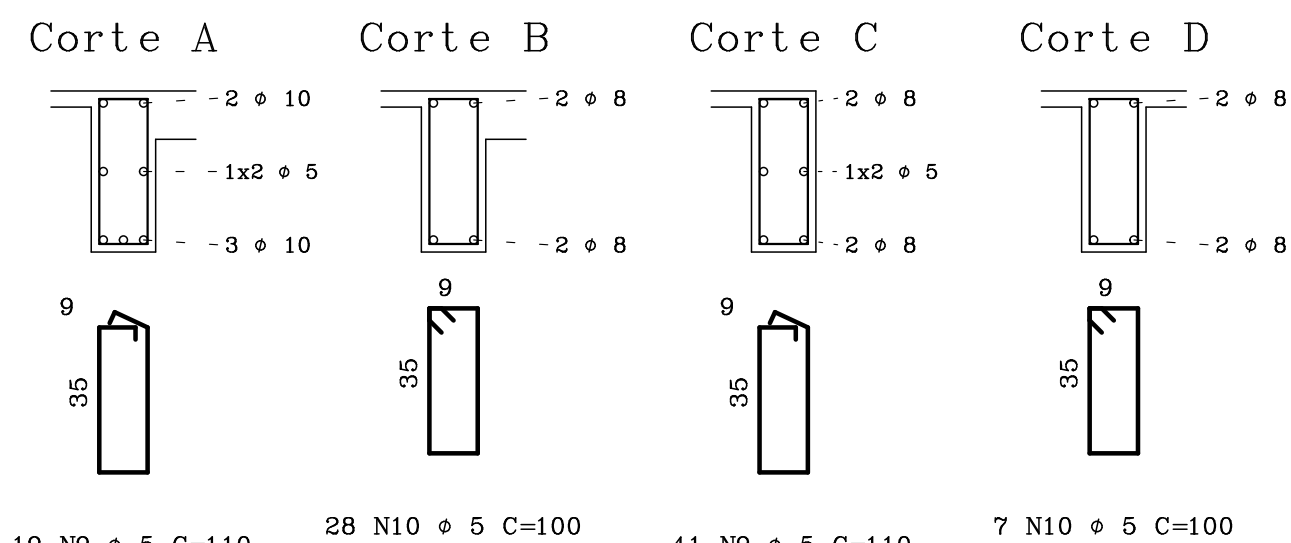
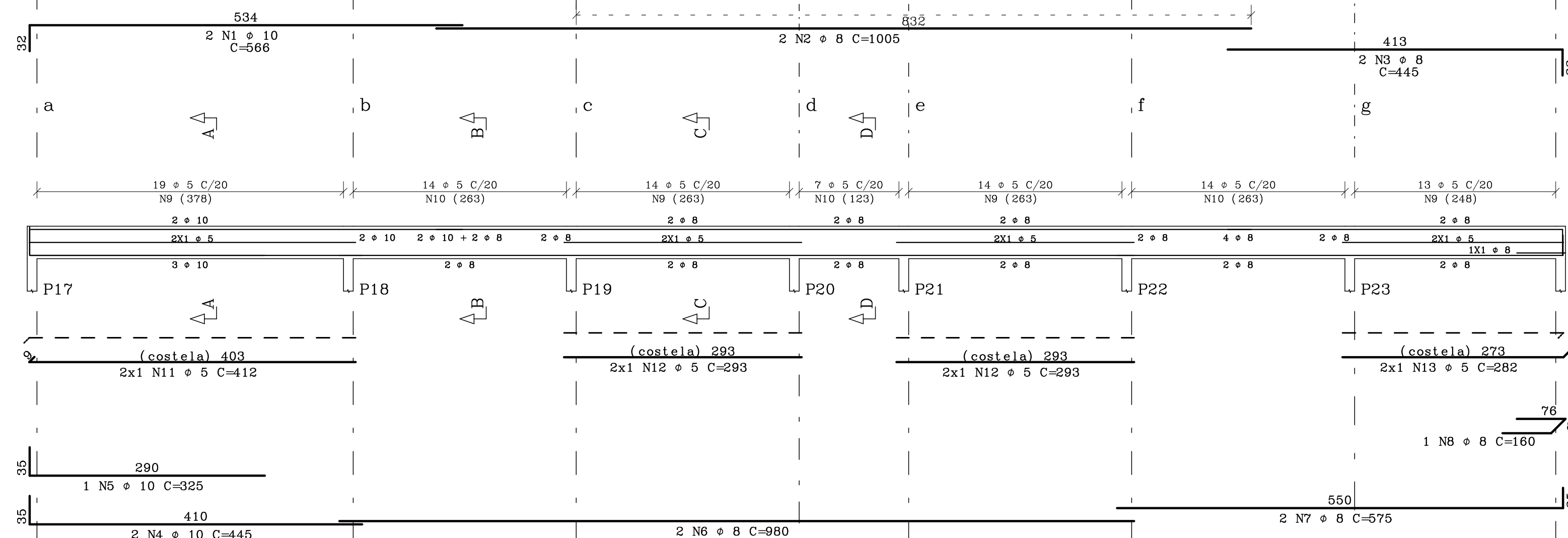
V1



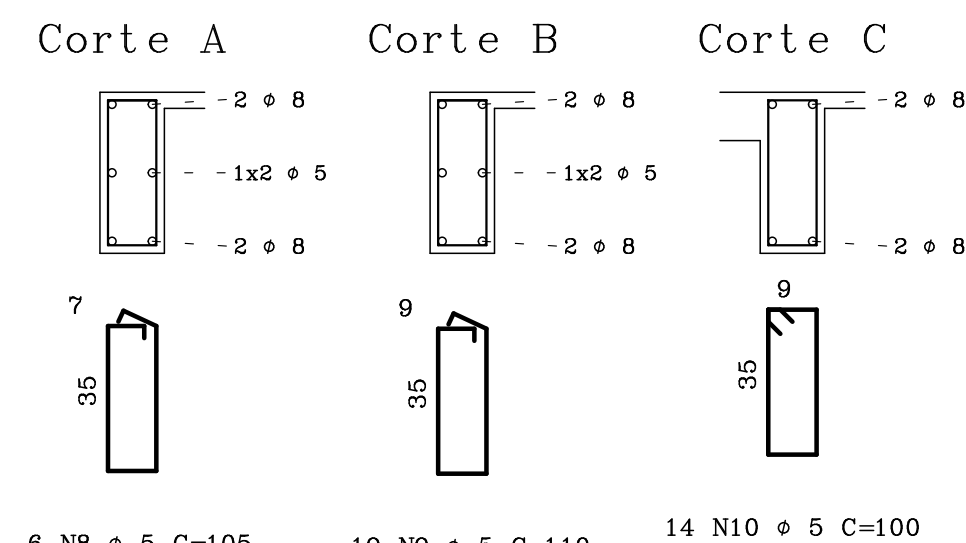
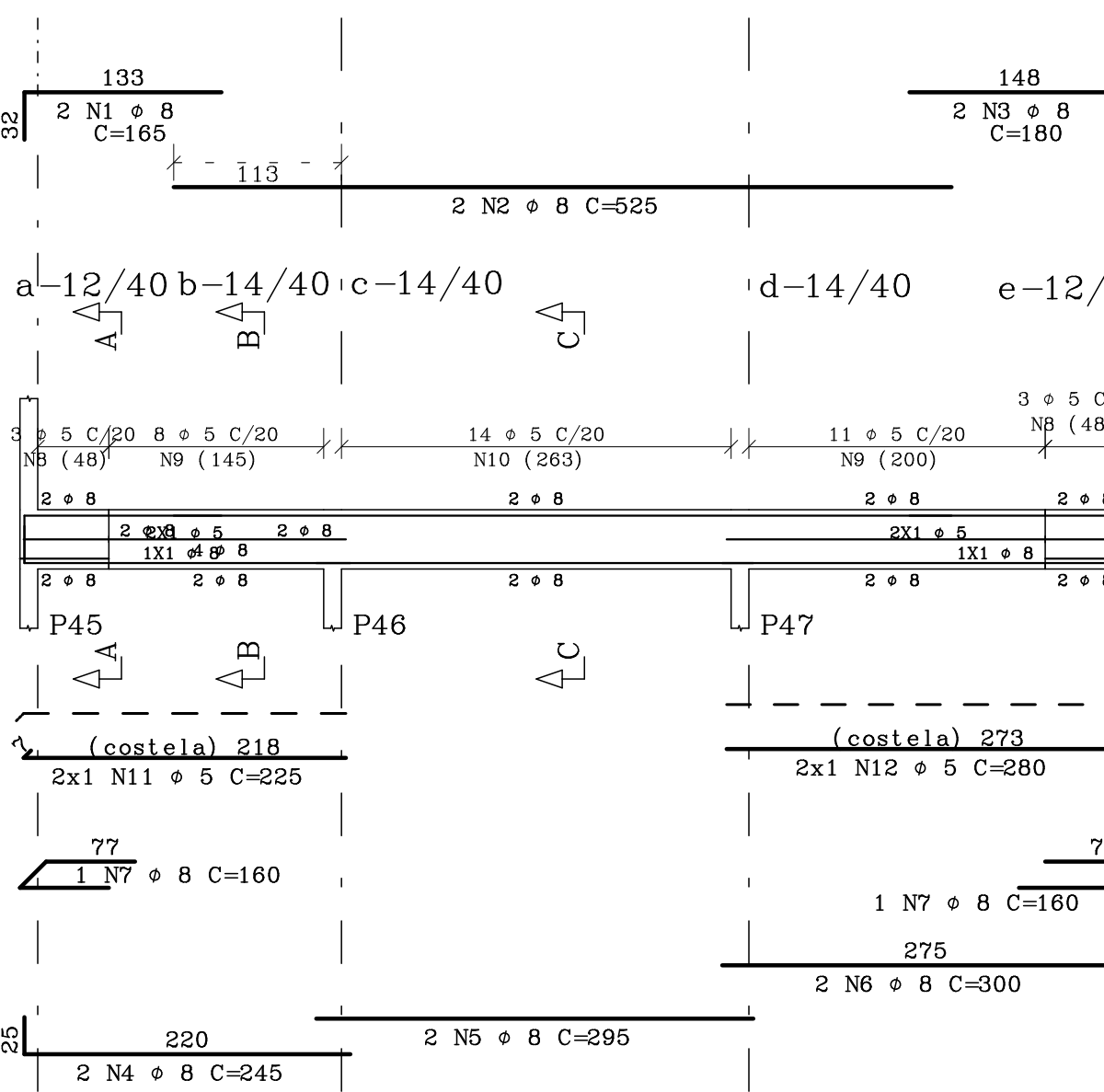
V2 12/40



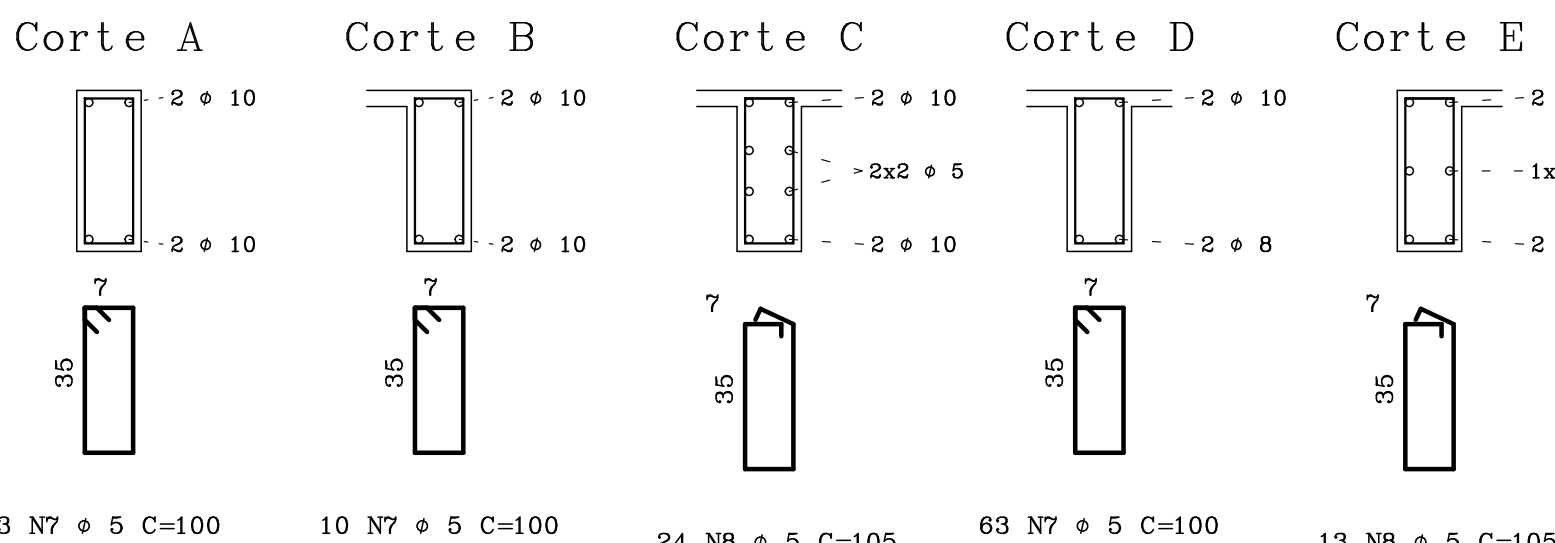
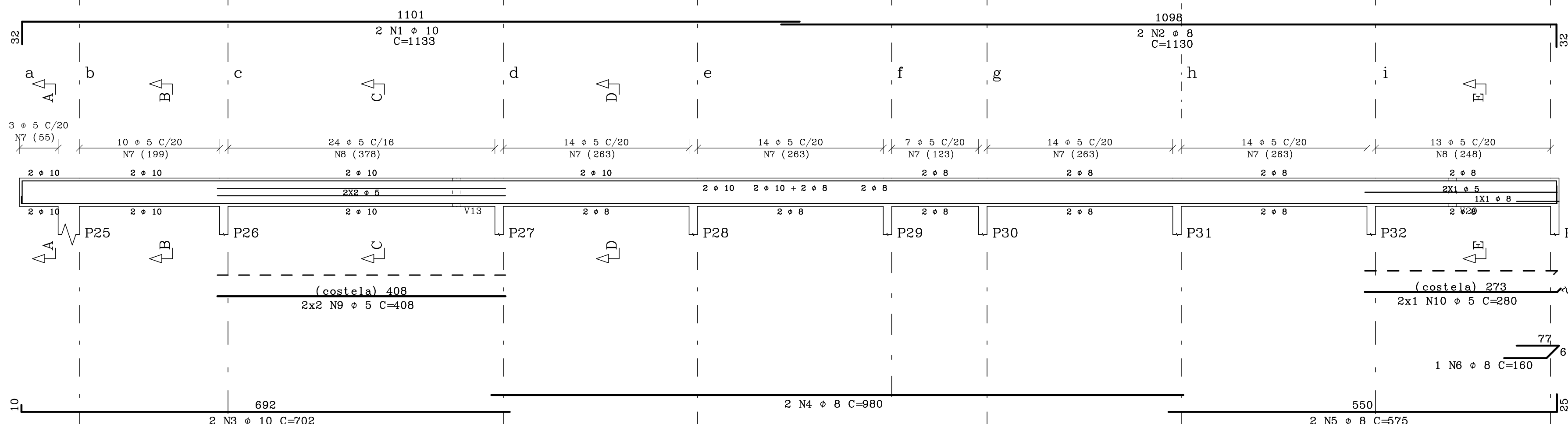
V3 14/40



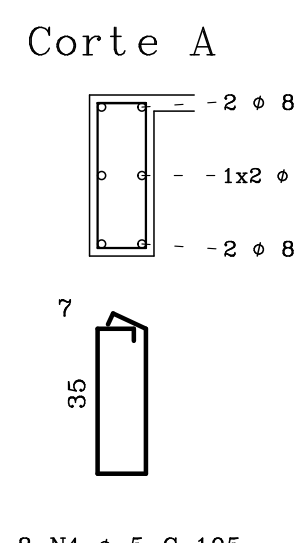
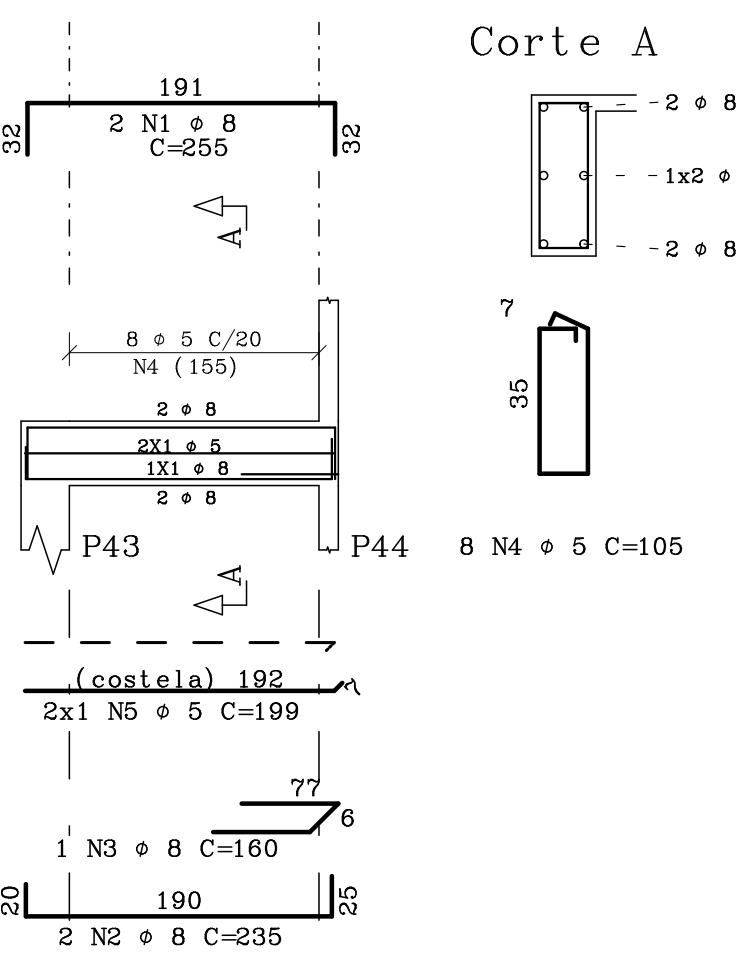
V7



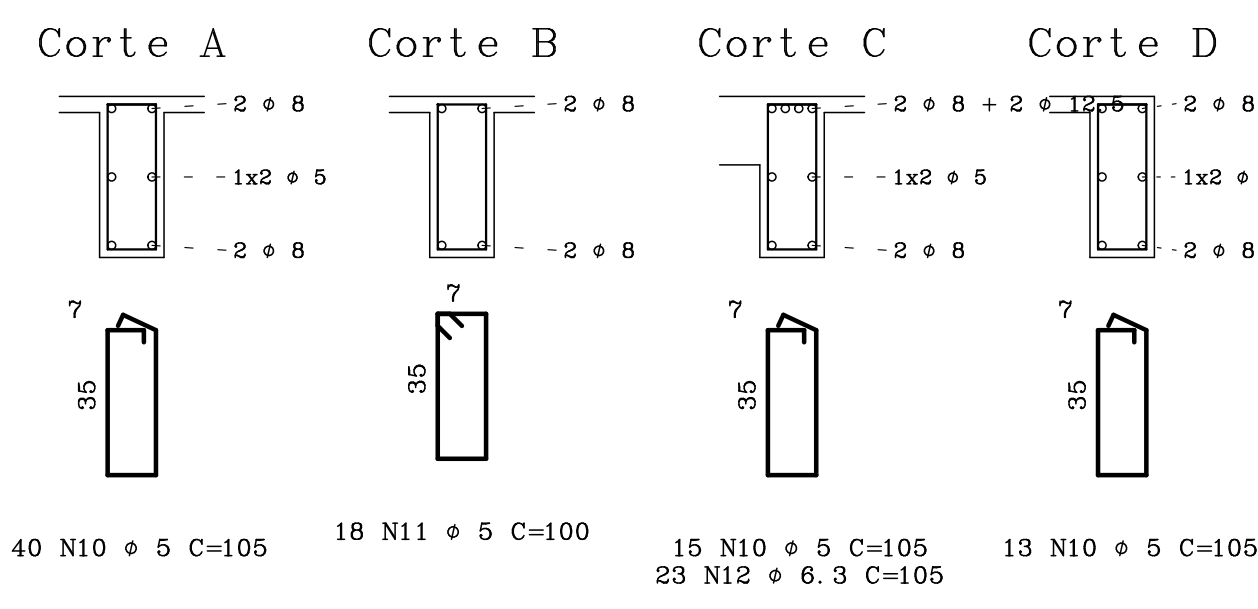
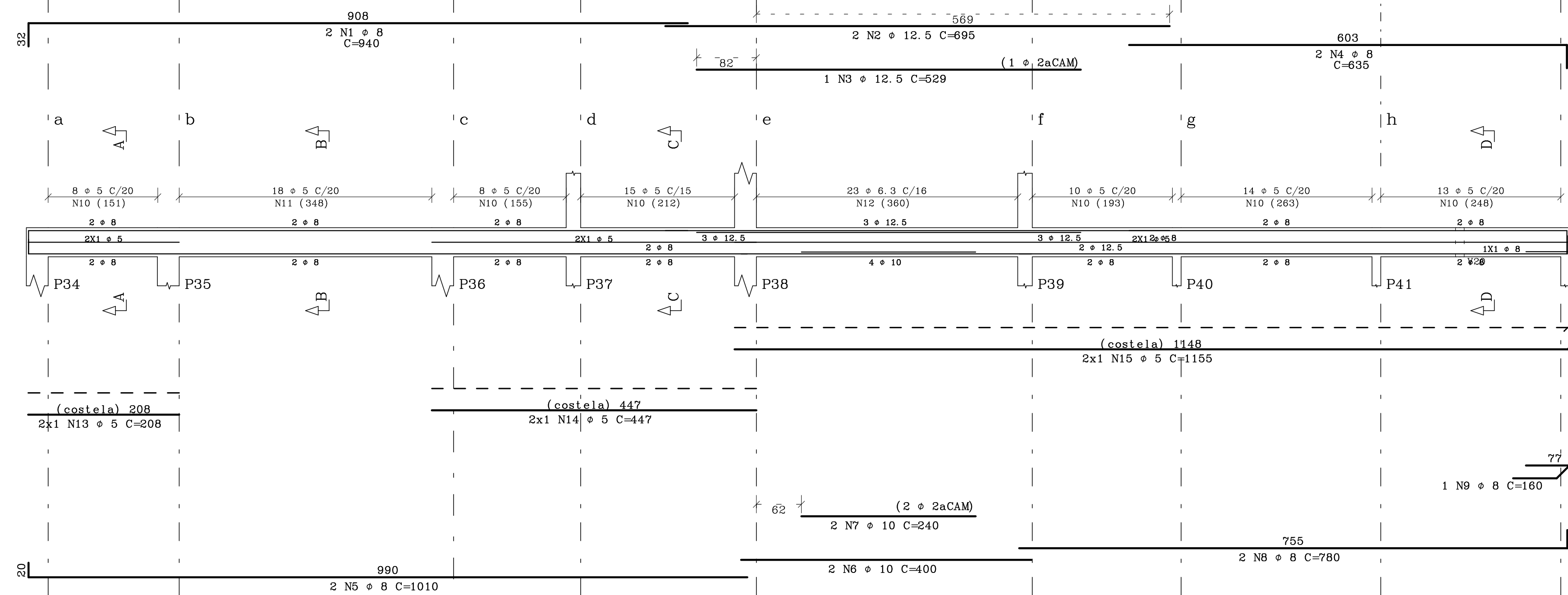
V4 12/40



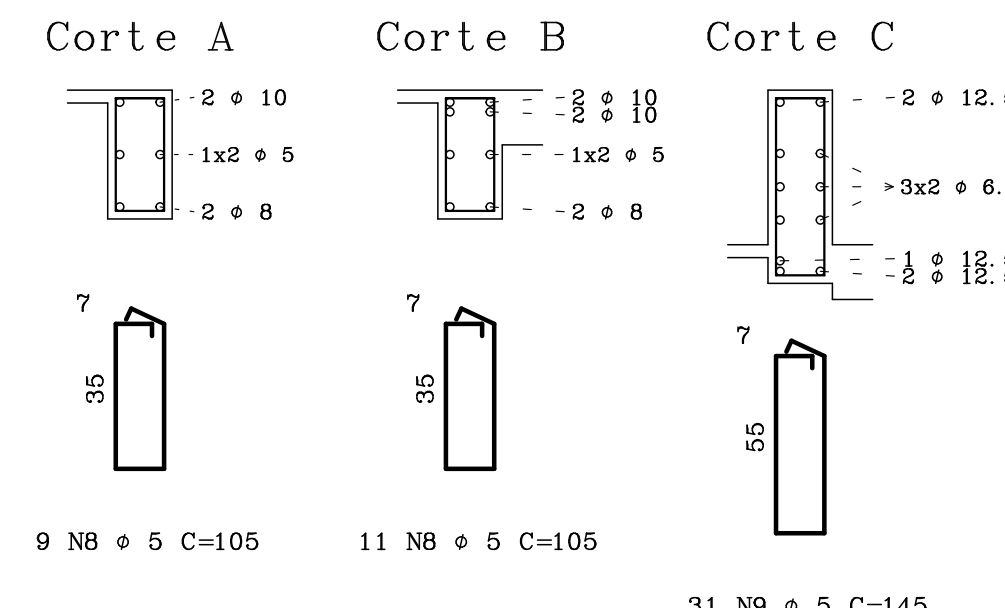
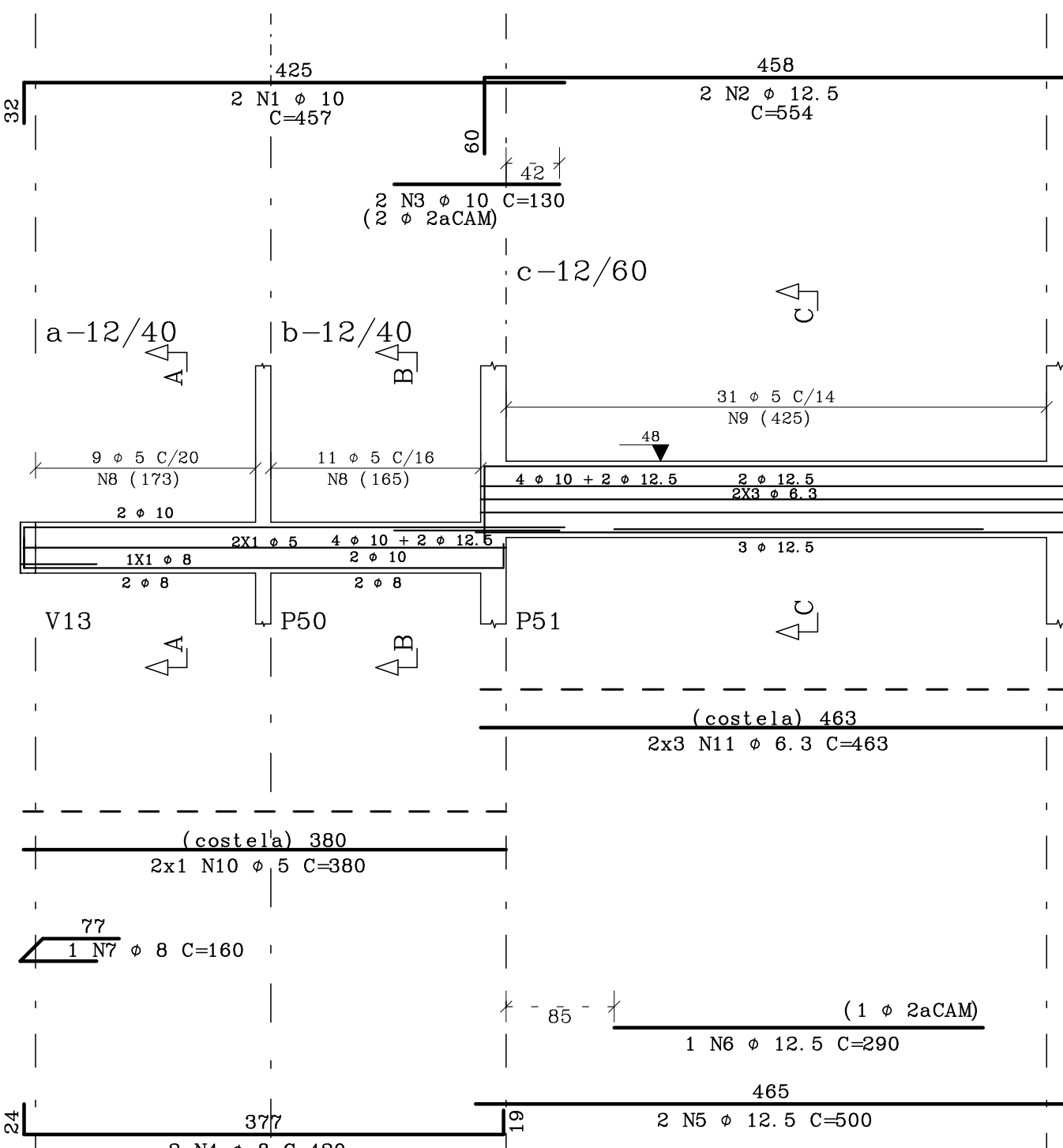
V6 12/40



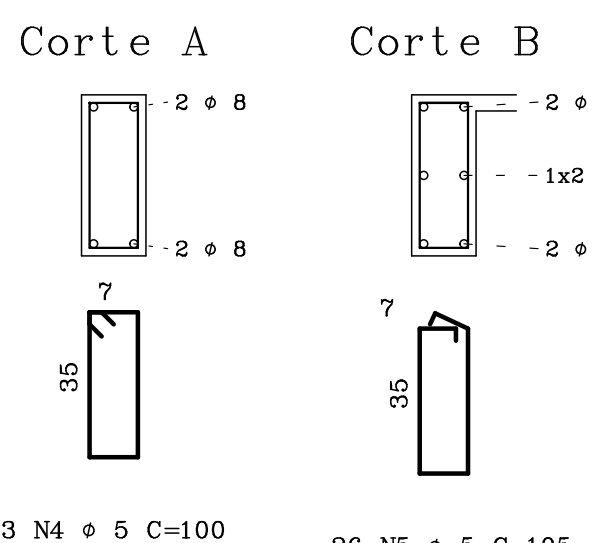
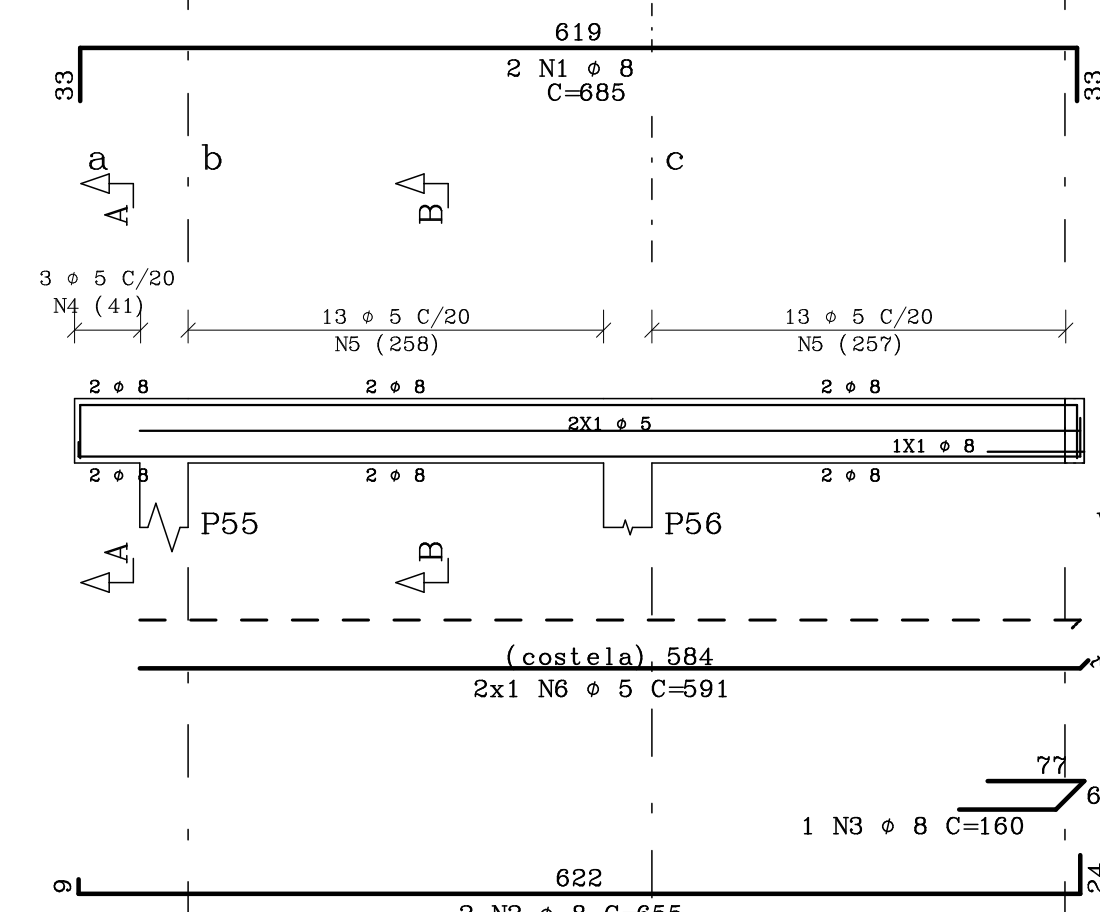
V5 12/40



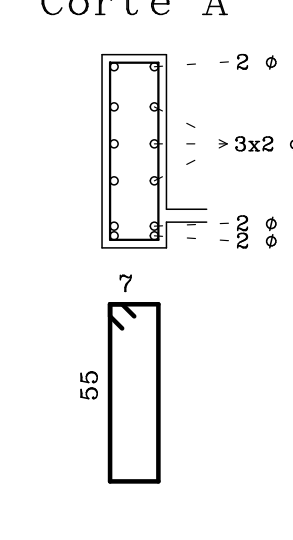
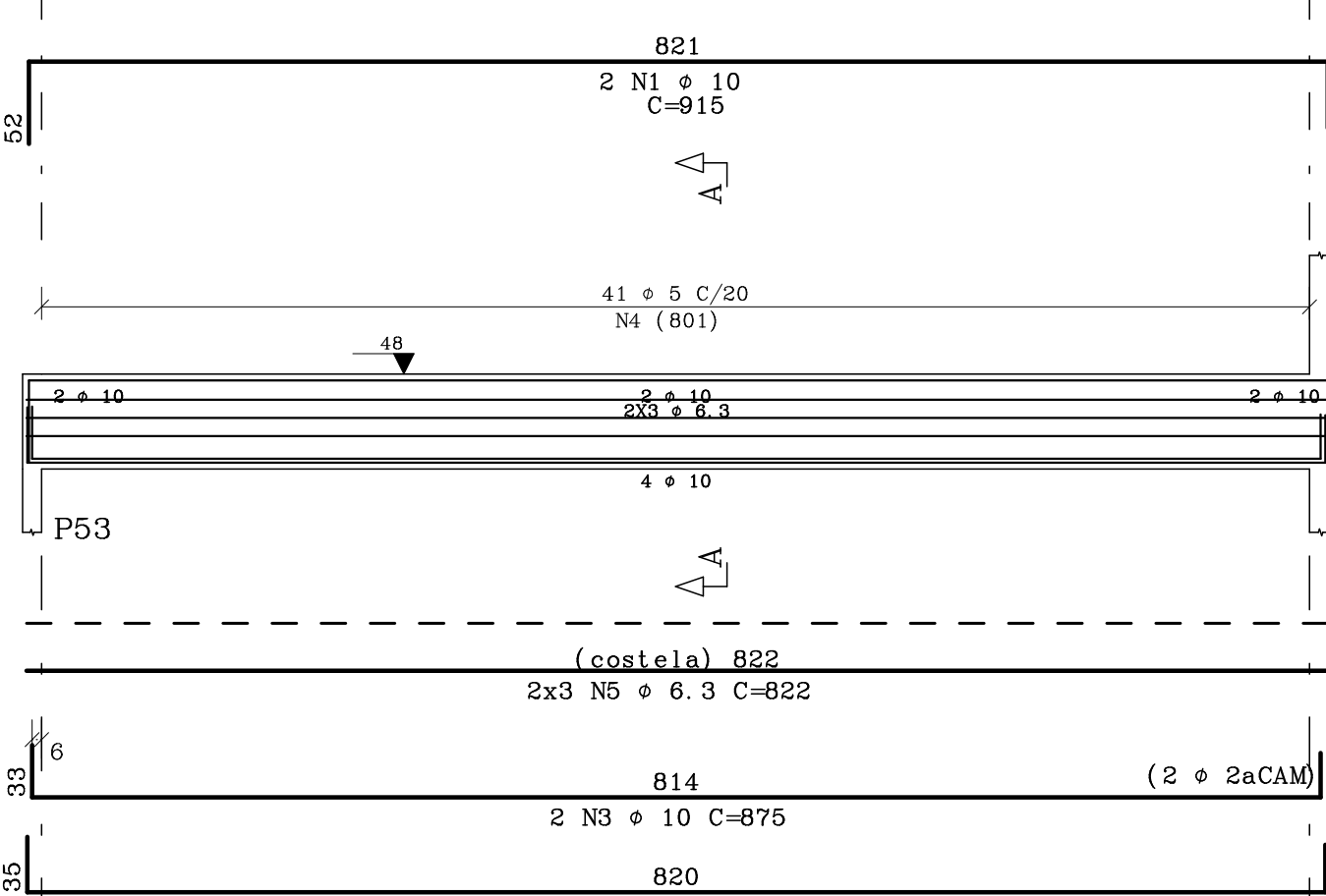
V8



V10 12/40



V9 12/60



	ACO	POS	BIT (mm)	QUANT	COMPR (m)	UNIT (cm)
V1	50A	1	8	2	950	
	50A	2	8	4	380	
	50A	3	8	2	155	
	60B	4	5	34	100	
	60B	5	5	7	100	
V2	50A	1	8	2	950	
	50A	2	8	2	910	
	60B	3	5	41	100	
V3	50A	1	10	2	566	
	50A	2	8	2	1000	
	50A	3	8	2	445	
	50A	4	8	2	445	
	50A	5	10	2	375	
	50A	6	8	2	980	
	50A	7	8	2	575	
	50A	8	8	60	160	
	60B	9	5	110	100	
	60B	10	5	35	100	
	60B	11	5	2	412	
	60B	12	5	4	293	
	60B	13	5	2	287	
V4	50A	1	10	2	1133	
	50A	2	8	2	1130	
	50A	3	10	2	702	
	50A	4	8	2	980	
	50A	5	8	2	575	
	50A	6	8	1	160	
	60B	7	5	76	100	
	60B	8	5	37	105	
	60B	9	5	4	408	
	60B	10	5	2	280	

	ACO	POS	BIT (mm)	QUANT	COMPR (m)	UNIT (cm)
V5	50A	1	8	2	940	
	50A	2	12.5	2	695	
	50A	3	12.5	2	279	
	50A	4	8	2	635	
	50A	5	8	2	1010	
	50A	6	10	2	400	
	50A	7	10	2	240	
	50A	8	8	2	780	
	50A	9	8	68	160	
	60B	10	5	23	105	
	60B	11	5	18	100	
	60B	12	6.3	2	447	
	60B	13	5	2	208	
	60B	14	5	2	1155	
V6	50A	1	8	2	255	
	50A	2	8	2	235	
	50A	3	8	1	160	
	60B	4	5	8	105	
	60B	5	5	2	198	
V7	50A	1	8	2	165	
	50A	2	8	2	525	
	50A	3	8	2	180	
	50A	4	8	2	245	
	50A	5	8	2	295	
	50A	6	8	2	300	
	50A	7	8	2	160	
	60B	8	5	14	105	
	60B	9	5	19	110	
	60B	10	5	2	380	
	60B	11	5	2	225	
	60B	12	5	2	280	
V8	50A	1	10	2	457	
	50A	2	12.5	2	554	
	50A	3	10	2	130	
	50A	4	8	2	420	
	50A	5	12.5	2	500	
	50A	6	12.5	1	290	
	50A	7	8	1	160	
	60B	8	5	20	105	
	60B	9	5	31	145	
	60B	10	5	2	380	
	60B	11	6.3	6	463	
V9	50A	1	10	2	915	
	50A	2	10	2	885	
	50A	3	10	2	875	
	60B	4	5	41	140	
	60B	5	6.3	6	822	
V10	50A	1	8	2	685	
	50A	2	8	2	655	
	50A	3	8	1	160	
	60B	4	5	26	105	
	60B	5	5	2	591	

RESUMO ACO CA 50-60			
ACO	BIT (mm)	COMPR (m)	PESO (kg)
60B	5	708	113
50A	6.3	101	25
50A	8	348	139
50A	10	138	87
50A	12.5	43	43
Peso Total		60B =	113 kg
Peso Total		50A =	295 kg

CONCRETO		CARGAS PARA DIMENSIONAMENTO	
Fck=	25 MPa	A/C Máx. =0.60	CARGA UTILIZAÇÃO Kg/m2
Fctm=	28 GPa		REVESTIMENTO PISO Kg/m2
MATERIAL :		TIPOLO CERAMICO DE 6 PUROS	
REVESTIMENTO :		cm	
MATERIAL DE ENCHIMENTO:		Kg/m3	
REVESTIMENTO :		cm	
AUTOR DO PROJETO/REGISTRO PROJ:		RESPONSÁVEL TÉCNICO/REGISTRO PROJ:	
AUTOR DO PROJETO/REGISTRO PROJ:		RESPONSÁVEL TÉCNICO/REGISTRO PROJ:	
AUTOR DO PROJETO/REGISTRO PROJ:		RESPONSÁVEL TÉCNICO/REGISTRO PROJ:	
AUTOR DO PROJETO/REGISTRO PROJ:		RESPONSÁVEL TÉCNICO/REGISTRO PROJ:	

GOVERNO DO ESTADO DO PARANÁ			
SEIL - SECRETARIA DE INFRAESTRUTURA E LOGÍSTICA			
PARANÁ, EDIFICAÇÕES			
SECRETARIA DE PROJETOS			
PROPRIETÁRIO:		MUNICÍPIO:	
GOVERNO DO ESTADO DO PARANÁ		SECRETARIA REGIONAL	
UNIDADE PADRÃO PARA O ESTADO DO PARANÁ		CONTRIBUIÇÃO	
AUTOR DO PROJETO/REGISTRO PROJ:		PROJETO	
AUTOR DO PROJETO/REGISTRO PROJ:		ESTRUTURAL	
RESPONSÁVEL TÉCNICO/REGISTRO PROJ:		ARM. VIGAS DO TETO	
RESPONSÁVEL TÉCNICO/REGISTRO PROJ:		EST	
RESPONSÁVEL TÉCNICO/REGISTRO PROJ:		09 11	